

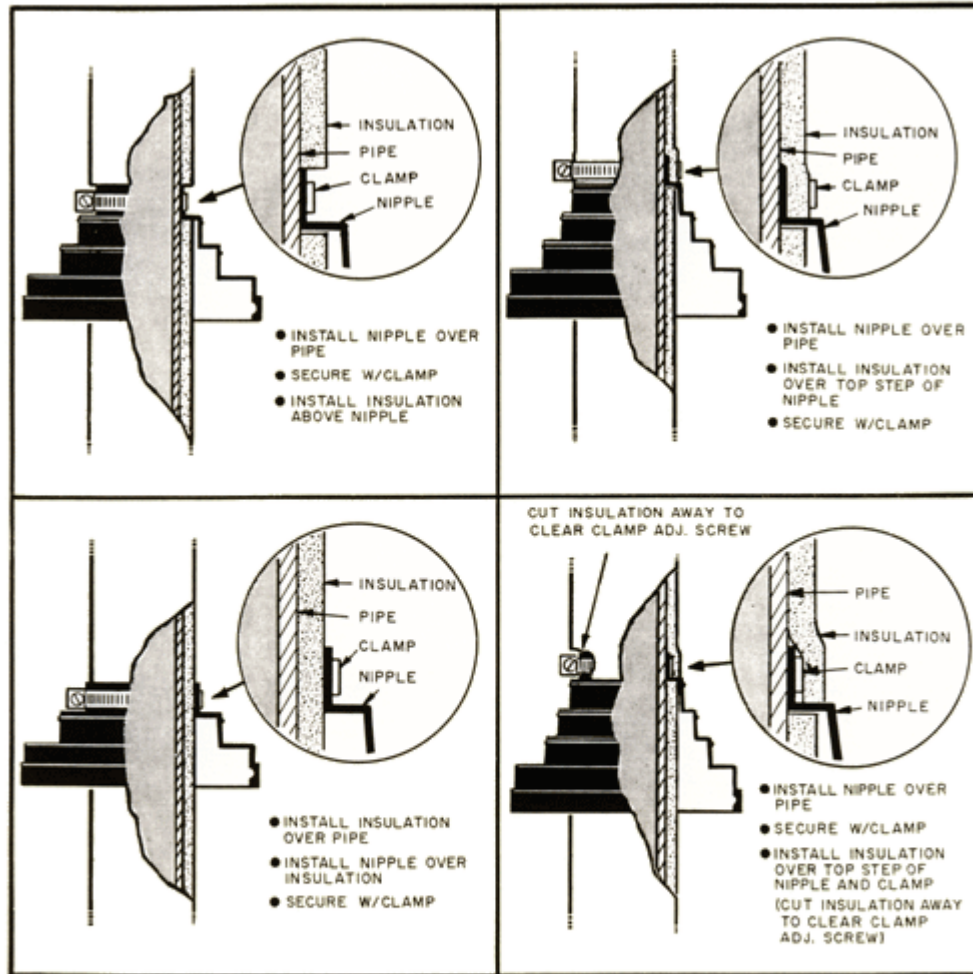


# Pipe Flashing Systems

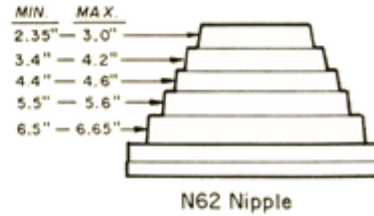
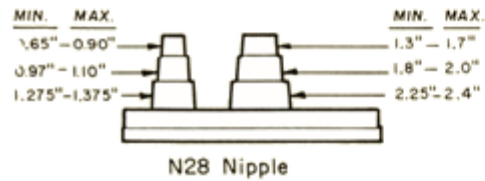
Technical Product Information

## CAP INSTALLATION TECHNIQUES WITH INSULATED PIPE

SITUATIONS DEPENDENT ON PIPE SIZE, INSULATION THICKNESS & DENSITY



NOTE: ALL DIMENSIONS ARE I.D. OF CONICAL SHAPED NIPPLES



[PIPE PORTAL SYSTEM](#)   [MULTIPLE PIPE PORTAL SYSTEM](#)   [ALUMI-FLASH](#)   [DECK-MATE](#)

**ROOF PRODUCTS & SYSTEMS** • 815 KIMBERLY DRIVE • CAROL STREAM, IL 60188 • TEL: (800) 624-8642 • FAX: (866) 466-9335

All information is subject to change without notice. Dimensions and specifications shown are within manufacturing tolerances.  
© Copyright Commercial Products Group of Hart & Cooley, Inc., November 2007. All Rights Reserved.

PROJECT PROFILES  
EQUIPMENT RAILS  
CONVENTIONAL ROOF CURBS  
PIPE MOUNTING  
METAL BUILDING ROOF CURBS  
DUST MOUNTING  
SPECIAL APPLICATION CURBS  
PIPE FLASHING  
KITCHEN VENTILATION CURBS  
TRANSITION CURBS  
CURB ADAPTERS AND EXTENSIONS  
SPECIFICATIONS  
EXPANSION AND WALL CURBS